

- 1
- 2
- 3
- 4
- 5
- 6
- 7
- 8
- 9
- 10
- 11
- 12
- 13
- 14
- 15
- 16
- 17
- 18

THREADED BODY

AISI 303 stainless steel.

PLUNGER

AISI 303 stainless steel.

Suggested tolerance for plunger insertion hole = H7.

SPRING

AISI 301 stainless steel.

LOCKING NUT

AISI 304 stainless steel.

LEVER

AISI 303 stainless steel.

LEVER COVER

High-resilience polyamide based (PA) technopolymer, black colour, matte finish.

STANDARD EXECUTIONS

- **GN 721.5:** without rest position.
- **GN 721.6:** with a stop notch in the retracted position.

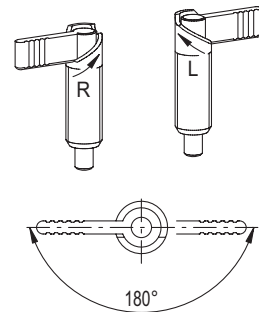
Version index:

- **RA:** plunger retracted position by anti-clockwise rotation, without locking nut.
- **RAK:** plunger retracted position by anti-clockwise rotation, with locking nut.
- **LA:** plunger retracted position by clockwise rotation, without locking nut.
- **LAK:** plunger retracted position by clockwise rotation, with locking nut.
- **RB:** plunger retracted position by anti-clockwise rotation, without locking nut, with lever cover.
- **RBK:** plunger retracted position by anti-clockwise rotation, with locking nut, with lever cover.
- **LB:** plunger retracted position by clockwise rotation, without locking nut, with lever cover.
- **LBK:** plunger retracted position by clockwise rotation, with locking nut, with lever cover.

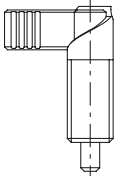
FEATURES AND APPLICATIONS

GN 721.5 and GN 721.6 lever indexing plungers are used when the plunger must be retracted quickly. By rotating the lifting lever by 180°, the plunger is retracted.

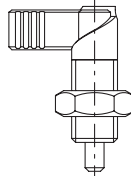
In GN 721.6 execution the lever is kept in this position by a notch.



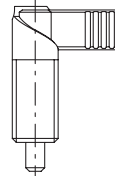
RA



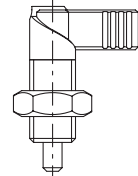
RAK



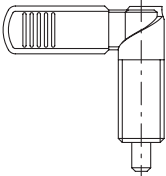
LA



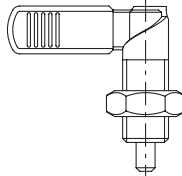
LAK



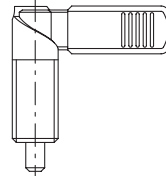
RB



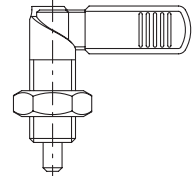
RBK



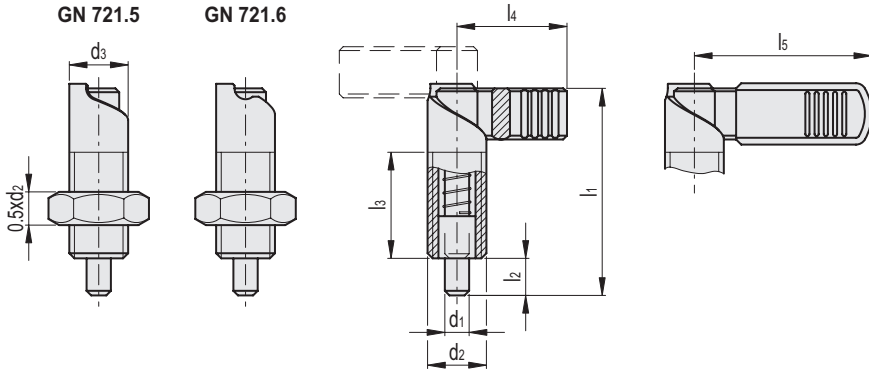
LB



LBK



Conversion Table 1 mm = 0.039 inch	
d1	
mm	inch
5	0.20
6	0.24
8	0.31
10	0.39



GN 721.5-RA

GN 721.5-RAK

INOX STAINLESS STEEL METRIC

Code	Description	Code	Description	d1		d2	d3	l1	l2	l3+1.5	l4	[N]*	[N]#	△
				Plunger	Hole H7									
GN.39719	GN 721.5-5-M10X1-RA	GN.39759	GN 721.5-5-M10X1-RAK	5		M10x1	10	37.5	6	19	21	7	20	90
GN.39720	GN 721.5-6-M12X1,5-RA	GN.39760	GN 721.5-6-M12X1,5-RAK	6		M12x1.5	12	47	8	26	26	8	18	190
GN.39721	GN 721.5-8-M16X1,5-RA	GN.39761	GN 721.5-8-M16X1,5-RAK	8		M16x1.5	16	56	10	30	32	11	29	64
GN.39722	GN 721.5-10-M20X1,5-RA	GN.39762	GN 721.5-10-M20X1,5-RAK	10		M20x1.5	20	69	12	37	37	21	57	129

GN 721.5-LA

GN 721.5-LAK

GN.39711	GN 721.5-5-M10X1-LA	GN.39751	GN 721.5-5-M10X1-LAK	5		M10x1	10	37.5	6	19	21	7	20	90
GN.39712	GN 721.5-6-M12X1,5-LA	GN.39752	GN 721.5-6-M12X1,5-LAK	6		M12x1.5	12	47	8	26	26	8	18	190
GN.39713	GN 721.5-8-M16X1,5-LA	GN.39753	GN 721.5-8-M16X1,5-LAK	8		M16x1.5	16	56	10	30	32	11	29	64
GN.39714	GN 721.5-10-M20X1,5-LA	GN.39754	GN 721.5-10-M20X1,5-LAK	10		M20x1.5	20	69	12	37	37	21	57	129

GN 721.5-RB

GN 721.5-RBK

Code	Description	Code	Description	d1		d2	d3	l1	l2	l3+1.5	l5	[N]*	[N]#	△
				Plunger	Hole H7									
GN.39724	GN 721.5-6-M12X1,5-RB	GN.39764	GN 721.5-6-M12X1,5-RBK	6		M12x1.5	12	47	8	26	32	8	18	155
GN.39725	GN 721.5-8-M16X1,5-RB	GN.39765	GN 721.5-8-M16X1,5-RBK	8		M16x1.5	16	56	10	30	42	11	29	66
GN.39726	GN 721.5-10-M20X1,5-RB	GN.39766	GN 721.5-10-M20X1,5-RBK	10		M20x1.5	20	69	12	37	52	21	57	132

GN 721.5-LB

GN 721.5-LBK

GN.39716	GN 721.5-6-M12X1,5-LB	GN.39756	GN 721.5-6-M12X1,5-LBK	6		M12x1.5	12	47	8	26	32	8	18	156
GN.39717	GN 721.5-8-M16X1,5-LB	GN.39757	GN 721.5-8-M16X1,5-LBK	8		M16x1.5	16	56	10	30	42	11	29	66
GN.39718	GN 721.5-10-M20X1,5-LB	GN.39758	GN 721.5-10-M20X1,5-LBK	10		M20x1.5	20	69	12	37	52	21	57	132

GN 721.6-RA

GN 721.6-RAK

Code	Description	Code	Description	d1		d2	d3	l1	l2	l3+1.5	l4	[N]*	[N]#	△
				Plunger	Hole H7									
GN.39819	GN 721.6-5-M10X1-RA	GN.39859	GN 721.6-5-M10X1-RAK	5		M10x1	10	37.5	6	19	21	7	20	18
GN.39820	GN 721.6-6-M12X1,5-RA	GN.39860	GN 721.6-6-M12X1,5-RAK	6		M12x1.5	12	47	8	26	26	8	18	31
GN.39821	GN 721.6-8-M16X1,5-RA	GN.39861	GN 721.6-8-M16X1,5-RAK	8		M16x1.5	16	56	10	30	32	11	29	65
GN.39822	GN 721.6-10-M20X1,5-RA	GN.39862	GN 721.6-10-M20X1,5-RAK	10		M20x1.5	20	69	12	37	37	21	57	130

GN 721.6-LA

GN 721.6-LAK

GN.39811	GN 721.6-5-M10X1-LA	GN.39851	GN 721.6-5-M10X1-LAK	5		M10x1	10	37.5	6	19	21	7	20	18
GN.39812	GN 721.6-6-M12X1,5-LA	GN.39852	GN 721.6-6-M12X1,5-LAK	6		M12x1.5	12	47	8	26	26	8	18	31
GN.39813	GN 721.6-8-M16X1,5-LA	GN.39853	GN 721.6-8-M16X1,5-LAK	8		M16x1.5	16	56	10	30	32	11	29	66
GN.39814	GN 721.6-10-M20X1,5-LA	GN.39854	GN 721.6-10-M20X1,5-LAK	10		M20x1.5	20	69	12	37	37	21	57	129

GN 721.6-RB

GN 721.6-RBK

Code	Description	Code	Description	d1		d2	d3	l1	l2	l3+1.5	l5	[N]*	[N]#	△
				Plunger	Hole H7									
GN.39824	GN 721.6-6-M12X1,5-RB	GN.39864	GN 721.6-6-M12X1,5-RBK	6		M12x1.5	12	47	8	26	32	8	18	31
GN.39825	GN 721.6-8-M16X1,5-RB	GN.39865	GN 721.6-8-M16X1,5-RBK	8		M16x1.5	16	56	10	30	42	11	29	68
GN.39826	GN 721.6-10-M20X1,5-RB	GN.39866	GN 721.6-10-M20X1,5-RBK	10		M20x1.5	20	69	12	37	52	21	57	133

GN 721.6-LB

GN 721.6-LBK

GN.39816	GN 721.6-6-M12X1,5-LB	GN.39856	GN 721.6-6-M12X1,5-LBK	6		M12x1.5	12	47	8	26	32	8	18	31
GN.39817	GN 721.6-8-M16X1,5-LB	GN.39857	GN 721.6-8-M16X1,5-LBK	8		M16x1.5	16	56	10	30	42	11	29	68
GN.39818	GN 721.6-10-M20X1,5-LB	GN.39858	GN 721.6-10-M20X1,5-LBK	10		M20x1.5	20	69	12	37	52	21	57	133

* Spring preload

Spring maximum load